

# Installation Manual

AS-3127  
ARNOTT  
FRONT RIGHT AIR STRUT  
BENTLEY CONTINENTAL GT  
BENTLEY FLYING SPUR  
VOLKSWAGEN PHAETON (D1)



Congratulations on your purchase of an Arnott® air suspension product. We at Arnott Incorporated are proud to offer a high quality product at the industry's most competitive pricing. Thank you for your confidence in us and our product.

Proper installation is essential to experience and appreciate the benefits of this system. Please take a moment to review these installation instructions before you begin to install these components on your vehicle. The removal and installation of air suspension products should only be performed by a fully qualified, ASE Certified, professional.

It is equally important to be aware of all necessary safety measures while installing your new Air Suspension System. This includes proper lifting and immobilizing of the vehicle and isolation of any stored energy to prevent personal injury or property damage.

**"Engineered to Ride, Built to Last®"**



**WARNING:** *The air suspension system is under pressure (up to 10 bar, or 150 lbf/in). Verify pressure has been relieved and disconnect power to the air suspension system prior to disassembly. Do not allow dirt or grease to enter the system. Always wear standard hand, ear, and eye protection when servicing the air suspension system.*

Arnott® is committed to the quality of its products. If you have a question or problem with any Arnott product, please contact Arnott by calling **800-251-8993** during normal business hours or email [techassistance@arnottinc.com](mailto:techassistance@arnottinc.com). (In the EU please call +31 (0)73 7850 580 or email [info@arnotteurope.com](mailto:info@arnotteurope.com))

## GENERAL INFORMATION:

*Reading this manual signifies your agreement to the terms of the general release, waiver of liability, and hold harmless agreement, the full text of which is available at [www.arnottinc.com](http://www.arnottinc.com).*

- Not to be stored below 5°F (-15°C) or above 122°F (50°C).
- Avoid damage to air lines and cables.
- Removal and installation is only to be performed by fully qualified personnel.
- Use car manufacturer's diagnostic software.

**CAUTION:** *Damage to the vehicle and air suspension system can be incurred if work is carried out in a manner other than specified in the instructions or in a different sequence.*



*To avoid the possibility of short circuits while working with electric components consult your owner's manual on how to disconnect your battery.*



*Consult your vehicle owner's manual, service manual, or car dealer for the correct jacking points on your vehicle and for additional care, safety and maintenance instructions. Under no circumstances should any work be completed underneath the vehicle if it is not adequately supported, as serious injuries and death can occur.*



*This vehicle contains a "Closed Air Supply System". Replacement of components requires proper adherence to procedures set forth within OE servicing literature. Failure to comply with the OE prescribed procedures can result in component damage and/or failure.*

## AIR STRUT REMOVAL

1. SET STEERING TO STRAIGHT AHEAD.
2. RAISE VEHICLE.
3. REMOVE FRONT WHEEL. (FIGURE 1)

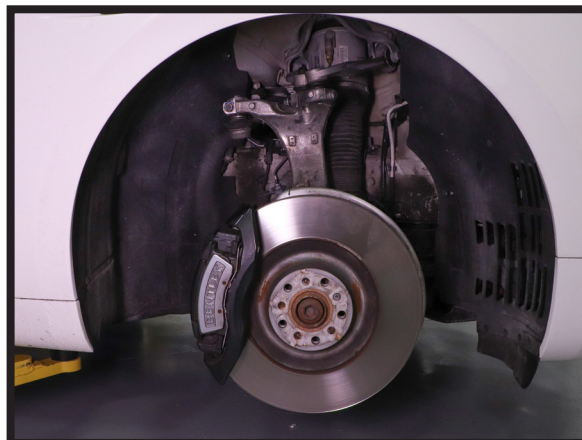


FIGURE 1

4. RAISE THE HOOD AND REMOVE ENGINE BAY TRIM. (FIGURES 2, 3)



FIGURE 2



FIGURE 3

5. LOCATE AND DISCONNECT THE STRUT'S ELECTRICAL CONNECTION, AND REMOVE RUBBER GROMMET FROM HOUSING. (FIGURES 4, 5, 6)

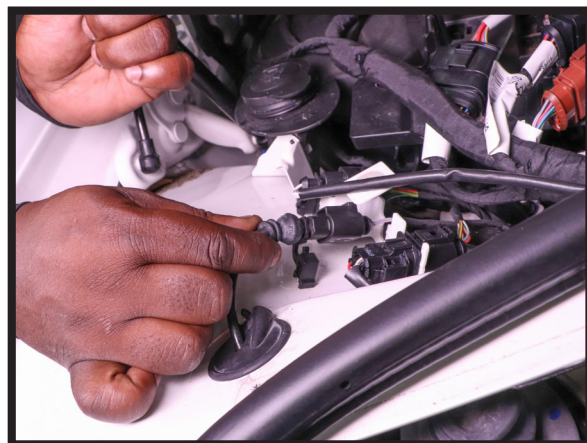


FIGURE 4

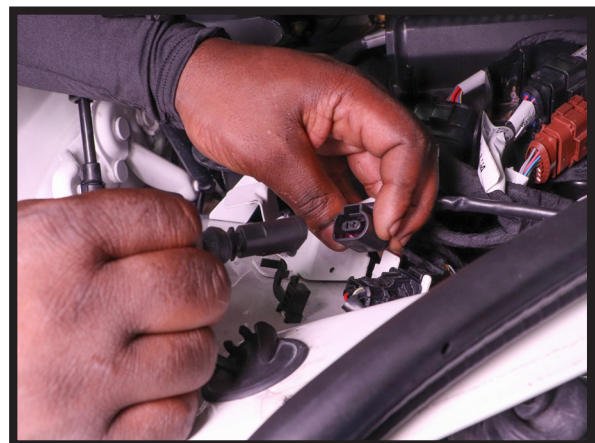


FIGURE 5

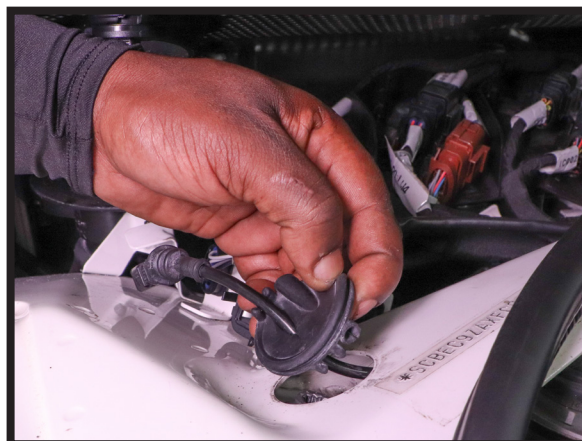


FIGURE 6

6. LOCATE THE THREE (3) TOP MOUNT BOLTS AND REMOVE THE BOLTS AND WASHERS. (FIGURES 7, 8, 9)

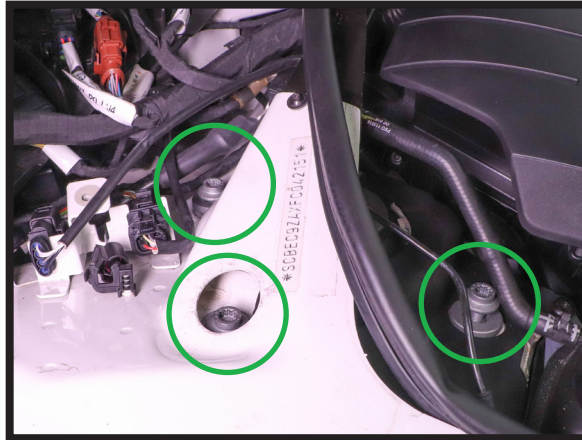


FIGURE 7

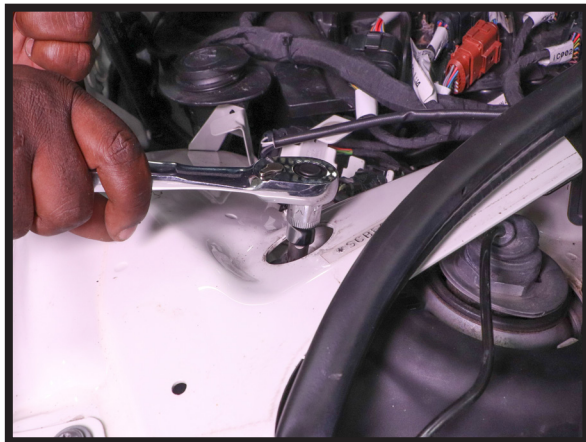


FIGURE 8



FIGURE 9

7. LOOSEN AND REMOVE THE AIR LINE FROM THE AIR STRUT. (FIGURE 10)

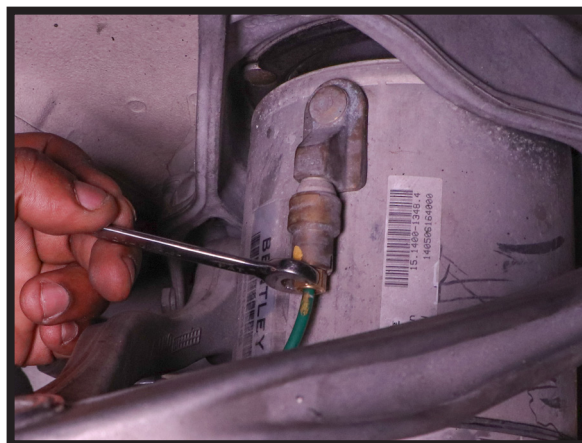


FIGURE 10

8. DETACH AIR LINE FROM RETAINING CLIP ON THE SIDE OF THE AIR STRUT. (FIGURE 11)

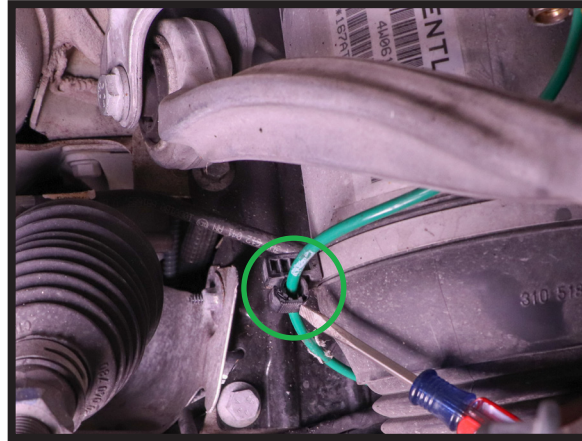


FIGURE 11

9. REMOVE OE AIR LINE FITTING FROM THE AIR LINE AND DISCARD. (FIGURE 12)

## REMOVAL



*Prior to inserting the existing air line into the new air strut you will need to remove the old original equipment air line fitting and discard.*

**NOTE:** SCRATCHES AND/OR DEEP CUTS IN THE AIR LINE CAN RESULT IN POSSIBLE LEAKS. INSPECT THE AIR LINE BEFORE INSERTION. AIR LINE NEEDS TO BE REPLACED IF DAMAGED.

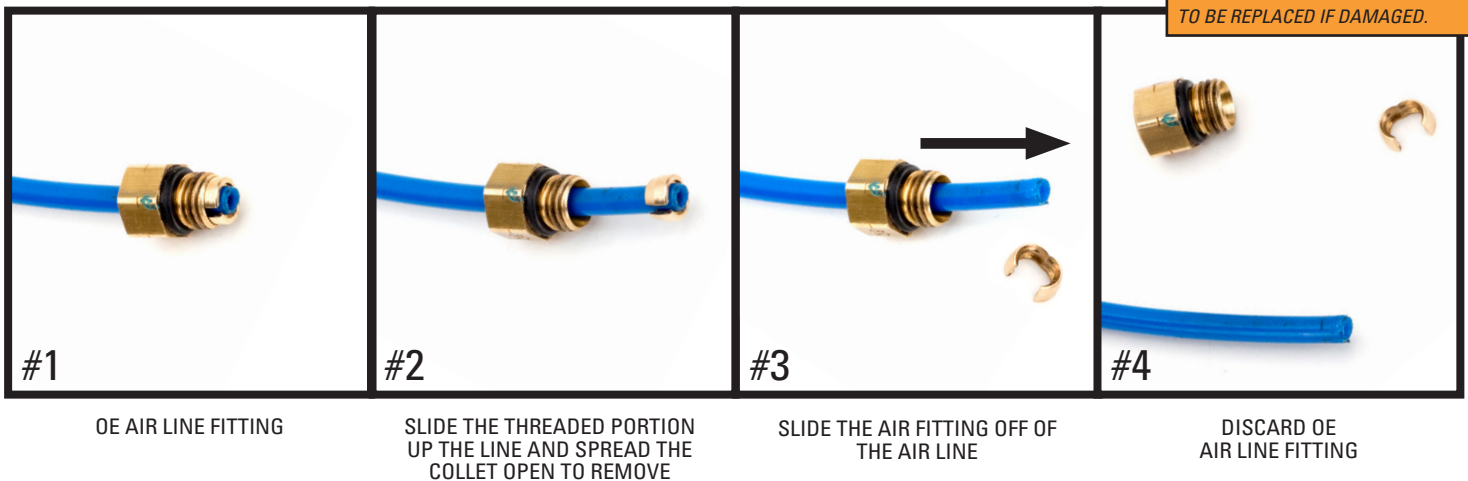


FIGURE 12

10. DETACH RIDE HEIGHT SENSOR. (FIGURES 13, 14)



FIGURE 13



FIGURE 14

11. LOOSEN AND REMOVE SWAY BAR BOLT (FIGURES 15, 16)



FIGURE 15



FIGURE 16

12. LOOSEN AND REMOVE THE TOP PINCH NUT/BOLT FROM THE SPINDLE/BALL JOINT ASSEMBLY. (FIGURES 17, 18)



FIGURE 17



FIGURE 18

13. LOOSEN AND REMOVE THE LOWER STRUT MOUNTING NUT/BOLT. (FIGURES 19, 20, 21)



FIGURE 19

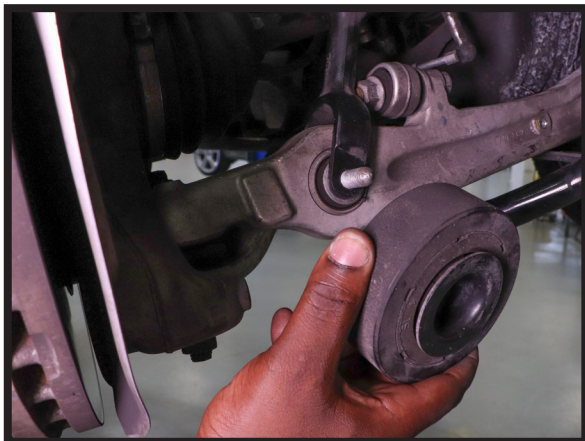


FIGURE 20



FIGURE 21

14. REMOVE OE AIR STRUT FROM VEHICLE. (FIGURE 22)



FIGURE 22

15. REMOVE THE FOUR (4) TOP NUTS ATTACHING THE AIR STRUT TO THE TOP MOUNT. (FIGURE 23)

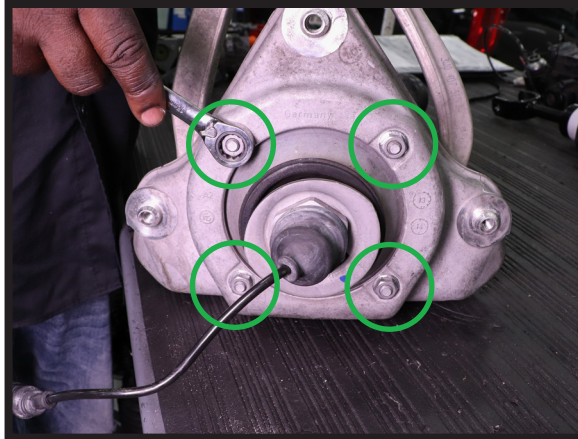


FIGURE 23

16. REMOVAL COMPLETE.



## AIR STRUT INSTALLATION



*Tighten all nuts and bolts to manufacturer's specifications during the installation process.*



*Do not remove the air fitting from the air strut. Doing so may cause damage and/or void warranty. Remove the black shipping pin from the new air fitting and insert the air line until fully seated.*

1. PREPARE THE AIR STRUT BY REMOVING THE THREADED PLASTIC PLUG FROM THE VALVE ON THE AIR STRUT AS DEMONSTRATED. (FIGURE 24)

### INSTALLATION - REMOVING THE THREADED PLASTIC PLUG FROM THE AIR STRUT VALVE.

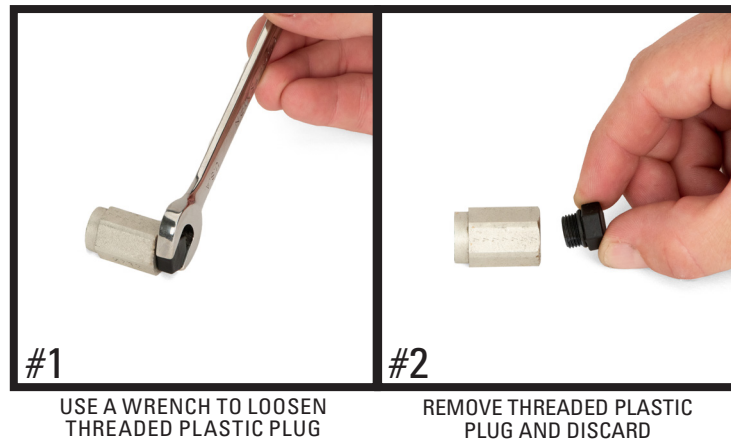


FIGURE 24

2. ATTACH THE AIR STRUT TO THE TOP MOUNT USING THE FOUR (4) TOP NUTS AND TIGHTEN TO MANUFACTURER'S SPECIFICATIONS. (FIGURE 25)

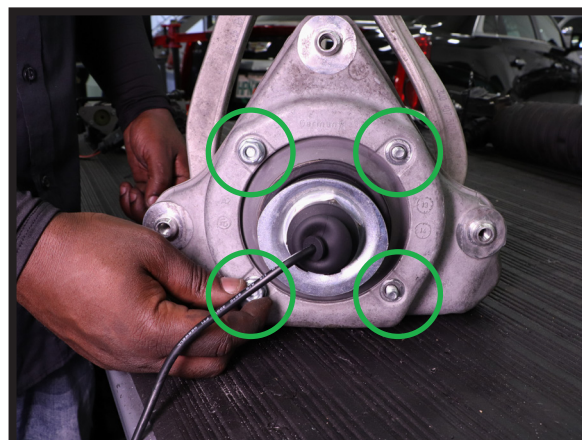


FIGURE 25

3. INSTALL NEW AIR STRUT INTO VEHICLE. (FIGURE 26)



FIGURE 26

4. REINSTALL STRUT'S LOWER MOUNT NUT/BOLT AND TIGHTEN TO MANUFACTURER'S SPECIFICATIONS. (FIGURES 27, 28, 29)



FIGURE 27



FIGURE 28



FIGURE 29

5. REINSTALL THE TOP PINCH NUT/BOLT INTO THE SPINDLE/BALL JOINT ASSEMBLY AND TIGHTEN TO MANUFACTURER'S SPECIFICATIONS. (FIGURE 30)



FIGURE 30

6. REINSTALL THE SWAY BAR BOLT AND TIGHTEN TO MANUFACTURER'S SPECIFICATIONS. (FIGURE 31)



FIGURE 31

7. REINSTALL RIDE HEIGHT SENSOR AND TIGHTEN TO MANUFACTURER'S SPECIFICATIONS. (FIGURE 32)



FIGURE 32

8. INSTALL THE PROVIDED AIR FITTING INTO THE VALVE ON THE AIR STRUT USING THE FIGURE BELOW AS AN EXAMPLE. (FIGURE 33)

### INSTALLATION - USING THE NEW AIR LINE FITTING PROVIDED IN THE KIT

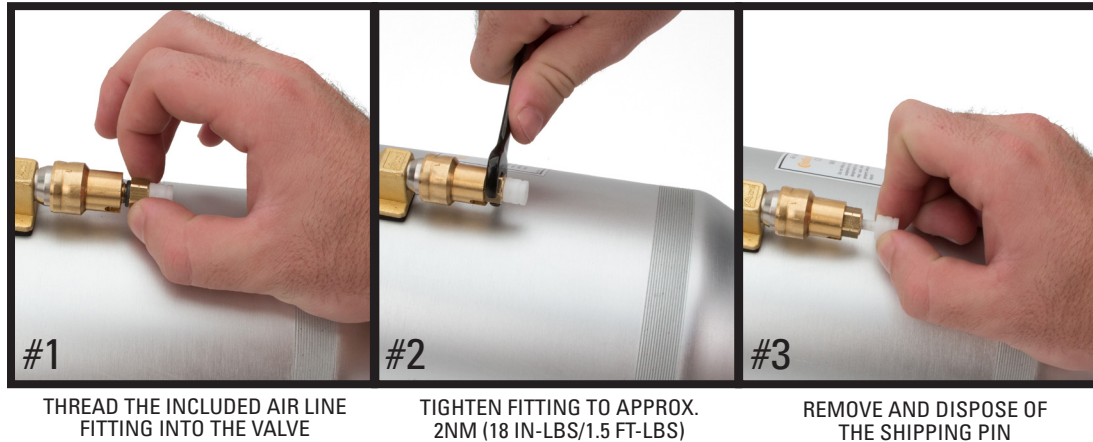


FIGURE 33

9. REINSTALL THE AIR LINE BY PUSHING THE LINE INTO THE STRUT'S FITTING UNTIL IT IS FIRMLY SEATED (FIGURE 34)

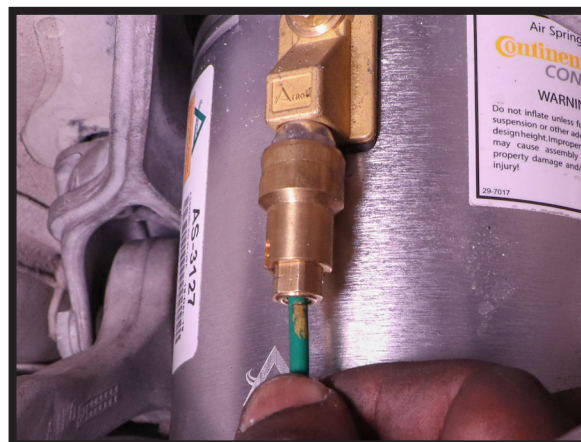


FIGURE 34

10. REINSTALL TOP MOUNT BOLTS AND WASHERS AND TIGHTEN TO MANUFACTURER'S SPECIFICATIONS. (FIGURES 35, 36)

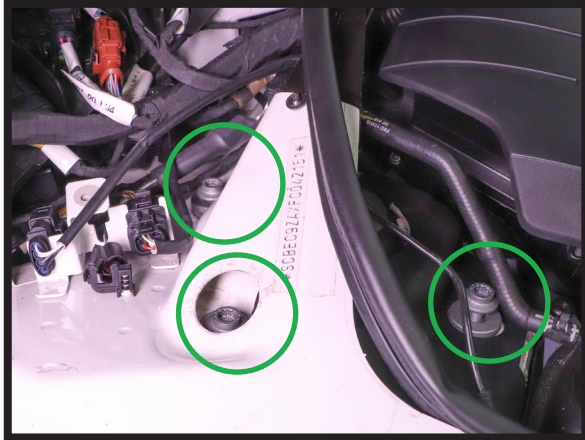


FIGURE 35

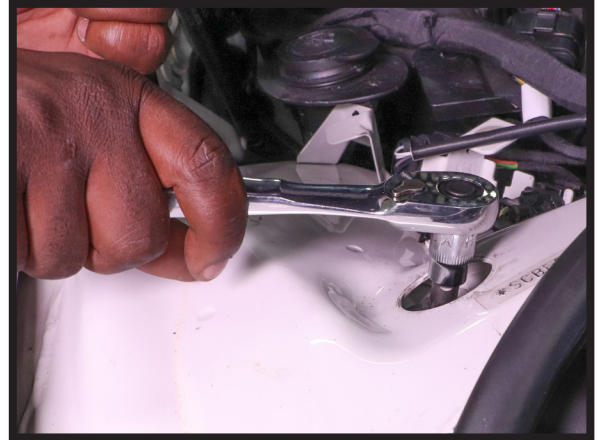


FIGURE 36

11. REINSTALL RUBBER GROMMET AND ELECTRICAL CONNECTION TO THE AIR STRUT. (FIGURES 37, 38)

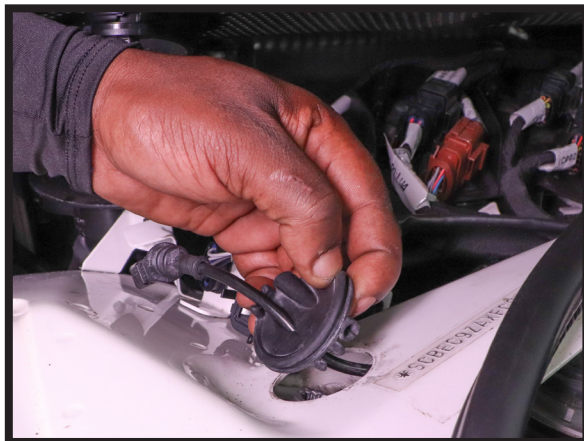


FIGURE 37

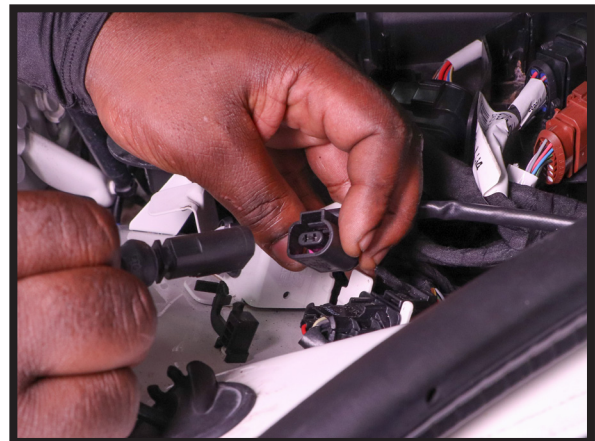


FIGURE 38

12. REINSTALL ENGINE BAY TRIM AND CLOSE THE HOOD.
13. REINSTALL WHEEL.
14. LOWER THE VEHICLE.
15. INSTALLATION COMPLETE.